

SPLIT TYPE
ROOM AIR CONDITIONER
WALL MOUNTED TYPE

SERVICE MANUAL



Indoor unit	Outdoor unit
ASYB18LDC	AOYS18LDC
ASYB18LDC	AOYS18LDL

CONTENTS

SPECIFICATIONS.....	1
DIMENSIONS	2
REFRIGERANT SYSTEM DIAGRAM	3
CIRCUIT DIAGRAM	4
INDOOR PCB CIRCUIT DIAGRAM	5
OUTDOOR PCB CIRCUIT DIAGRAM.	8
ERROR CONTENTS	10
DISASSEMBLY ILLUSTRATION	11
PARTS LIST.....	15
ACCESSORIES.....	17

SPECIFICATIONS

ELECTRICAL DATA

TYPE		COOL & HEAT INVERTER
INDOOR UNIT		ASYB18LDC
OUTDOOR UNIT		AOYS18LD_
COOLING CAPACITY		5.20 kW
HEATING CAPACITY		6.25 kW
POWER SOURCE		230 V
FREQUENCY		50 Hz
RUNNING CURRENT	COOLING	7.6 A
	HEATING	7.7 A
INPUT WATTS	COOLING	1.72 kW
	HEATING	1.73 kW
E.E.R.	COOLING	3.02 kW/kW
COP	HEATING	3.61 kW/kW
MOISTURE REMOVAL		2.8 L/hr
AIR CIRCULATION HIGH		700 m ³ /hr

NOISE LEVEL

INDOOR UNIT (Cool / Heat)	High	45 dB / 42 dB
	Med	39 dB / 38 dB
	Low	33 dB / 33 dB
	Quiet	26 dB / 27 dB
OUTDOOR UNIT (Cool / Heat)		50 dB / 50 dB

COMPRESSOR AND REFRIGERANT

TYPE		Hermetic type, 4 pole, 3 phase, DC inverter motor, Rotary
DISCRIMINATION		DA130AIF - 25F
REFRIGERANT R410A		1,150 g
FULL CHARGE	Pipe length 15 m	1,150 g
	20 m	1,250 g
ADDITIONAL CHARGE		20 g/m
MAXIMUM PIPING HEIGHT		15m

DIMENSIONS

INDOOR UNIT	H x W x D	283 x 790 x 230 mm
OUTDOOR UNIT	H x W x D	578 x 790 x 300 mm

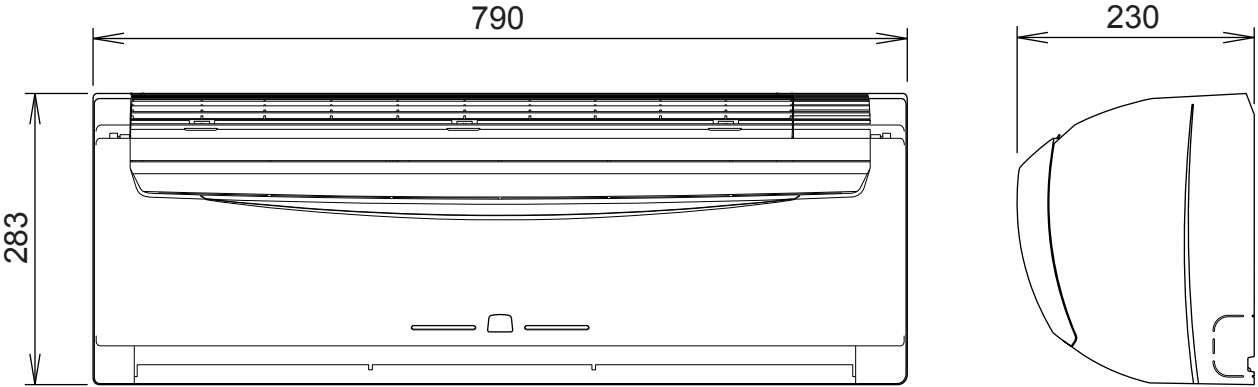
WEIGHT

INDOOR UNIT	Gross / Net	12.5 kg / 10 kg
OUTDOOR UNIT	Gross / Net	44 kg / 40 kg

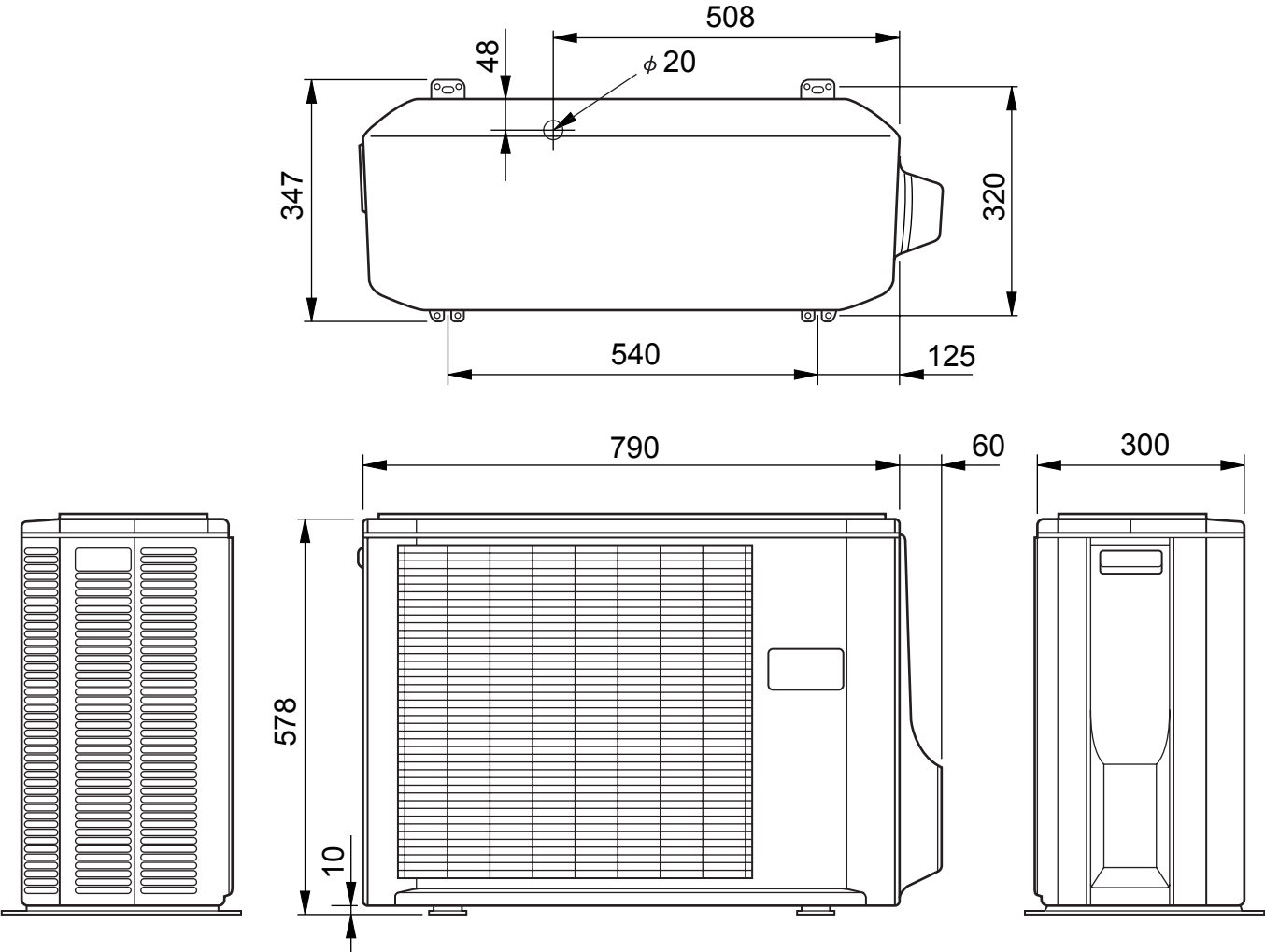
DIMENSIONS

unit : mm

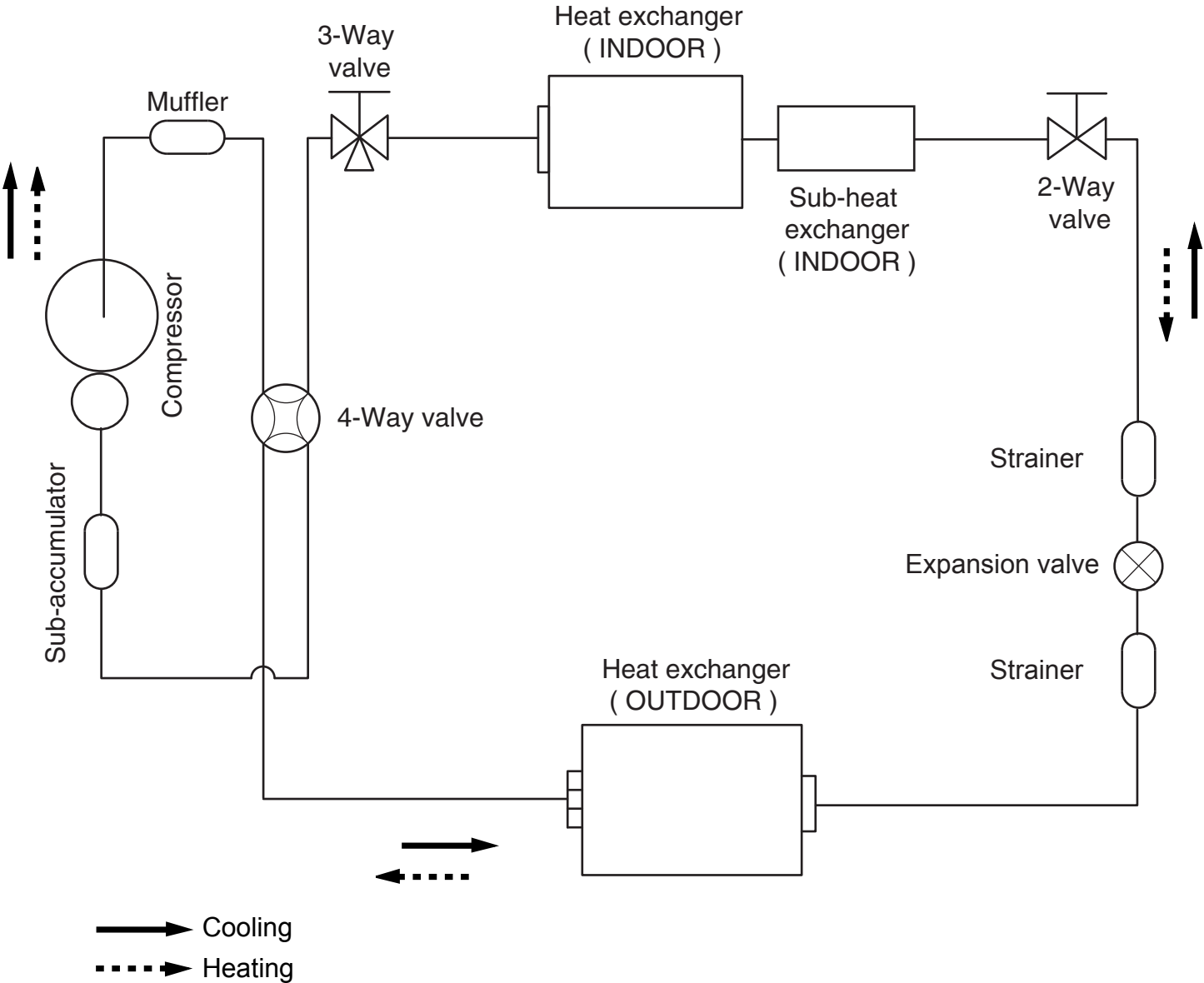
INDOOR UNIT



OUTDOOR UNIT



REFRIGERANT SYSTEM DIAGRAM



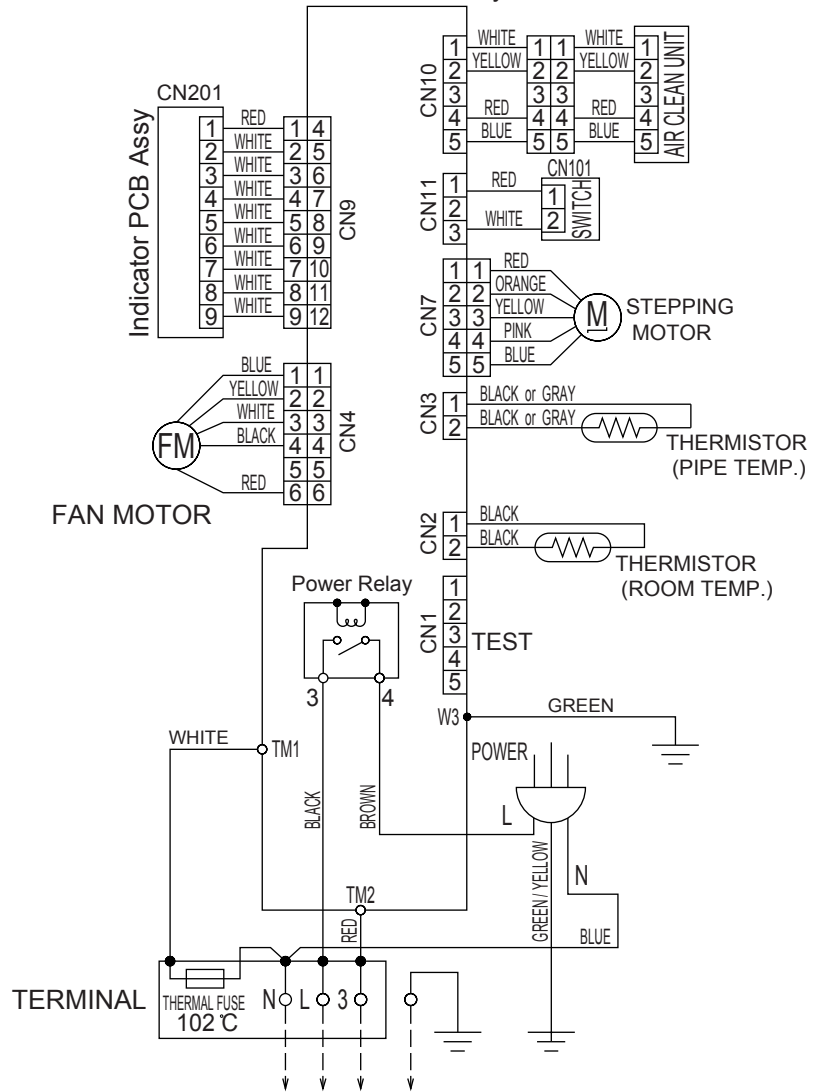
Refrigerant pipe diameter
 Liquid : 1/4" (6.35 mm)
 Gas : 1/2" (12.7 mm)

CIRCUIT DIAGRAM

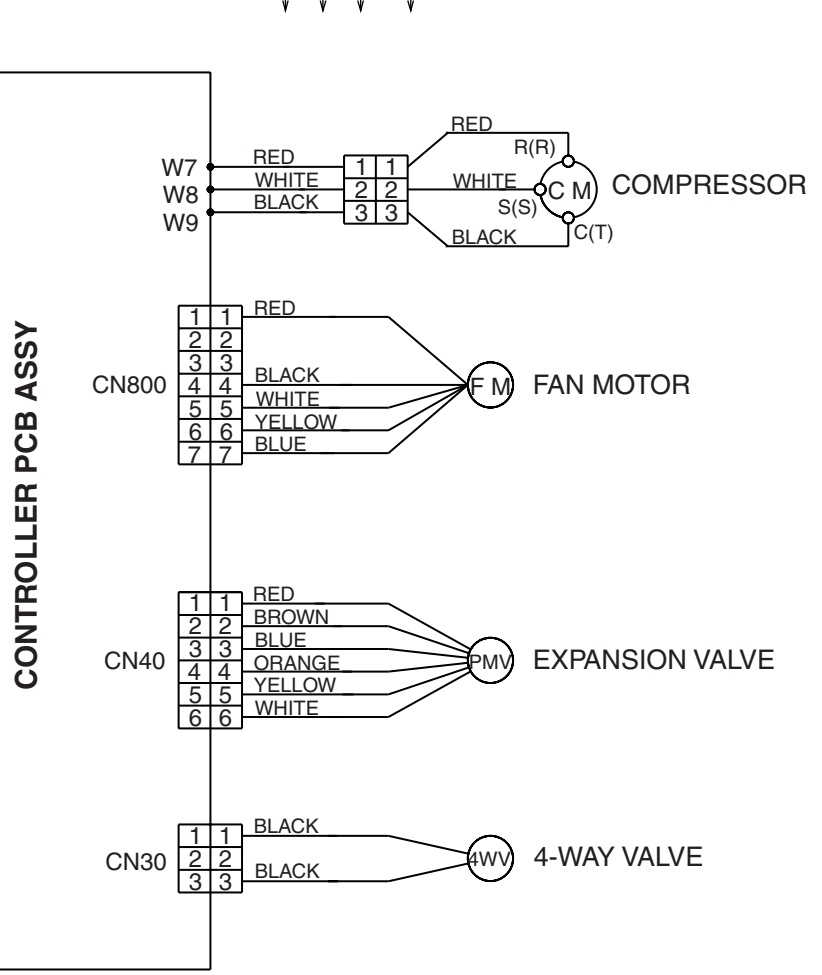
INDOOR UNIT

FAN MOTOR

Controller PCB Assy



OUTDOOR UNIT



PCB Circuit Diagrams

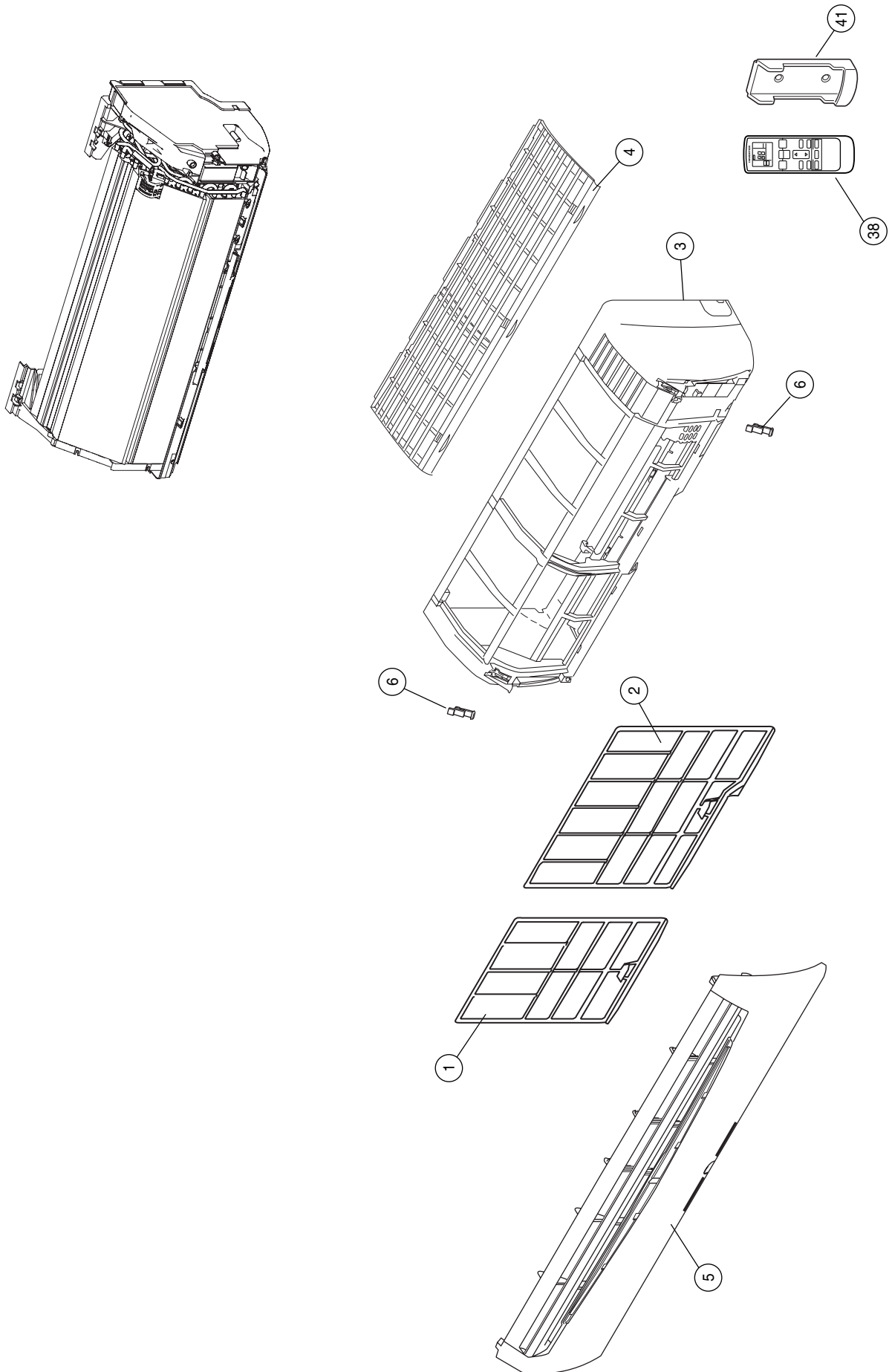
not available at time of publication

ERROR CONTENTS

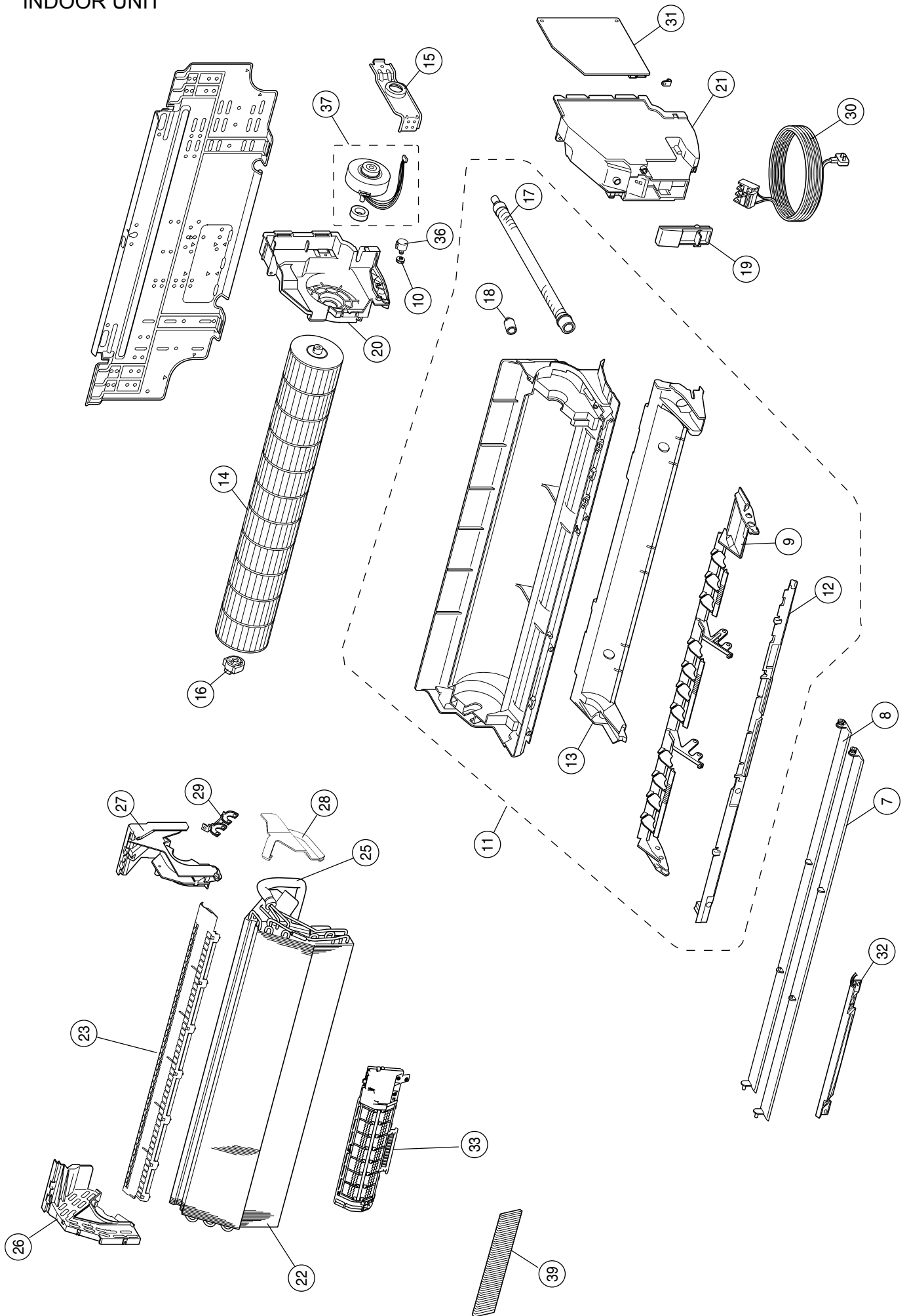
Error	Display		Error
	Operation LED	Timer LED	
Serial signal error	Off	2 flash	Serial signal (reverse) error, at operation start up
		3 flash	Serial signal (reverse) error, during operation
		4 flash	Serial signal (forward) error, at operation start up
		5 flash	Serial signal (forward) error, during operation
Indoor unit thermistor error	2 flash	2 flash	Indoor temperature thermistor open / short
		3 flash	Heat exchanger middle thermistor open / short
Outdoor unit thermistor error	3 flash	2 flash	Discharge thermistor open / short
		3 flash	Heat exchanger thermistor open
		4 flash	Outdoor temperature thermistor open / short
Indoor unit control error	4 flash	2 flash	Forced automatic SW welded
		3 flash	Main relay welded
		4 flash	Power interruption error
		7 flash	VDD permanent stop protection
		8 flash	reverse VDD permanent stop protection
Outdoor unit control error	5 flash	2 flash	Current trip error
		3 flash	CT abnormal
		5 flash	Compressor location detection error
		6 flash	Outdoor unit fan drive system abnormal
Indoor fan motor error	6 flash	2 flash	Abnormal lock
		3 flash	Abnormal rotation
Refrigerant cycle error	7 flash	2 flash	Discharge Temperature abnormal
		3 flash	Cooling high pressure abnormal rise
Optional function error	8 flash	4 flash	PFC circuit error
Model information error	0.1 sec on/off	0.1 sec on/off	Model information error

DISASSEMBLY ILLUSTRATION

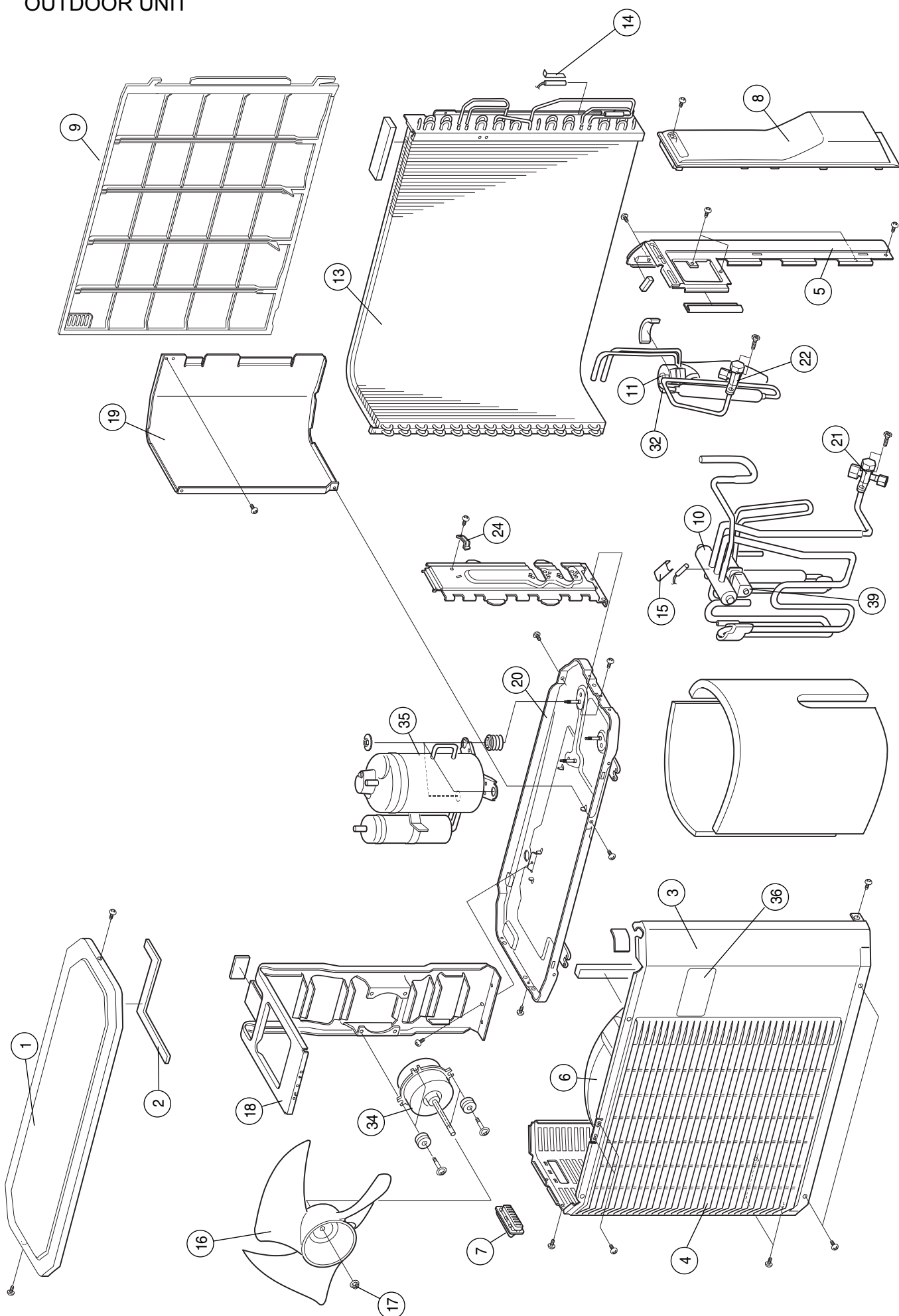
INDOOR UNIT



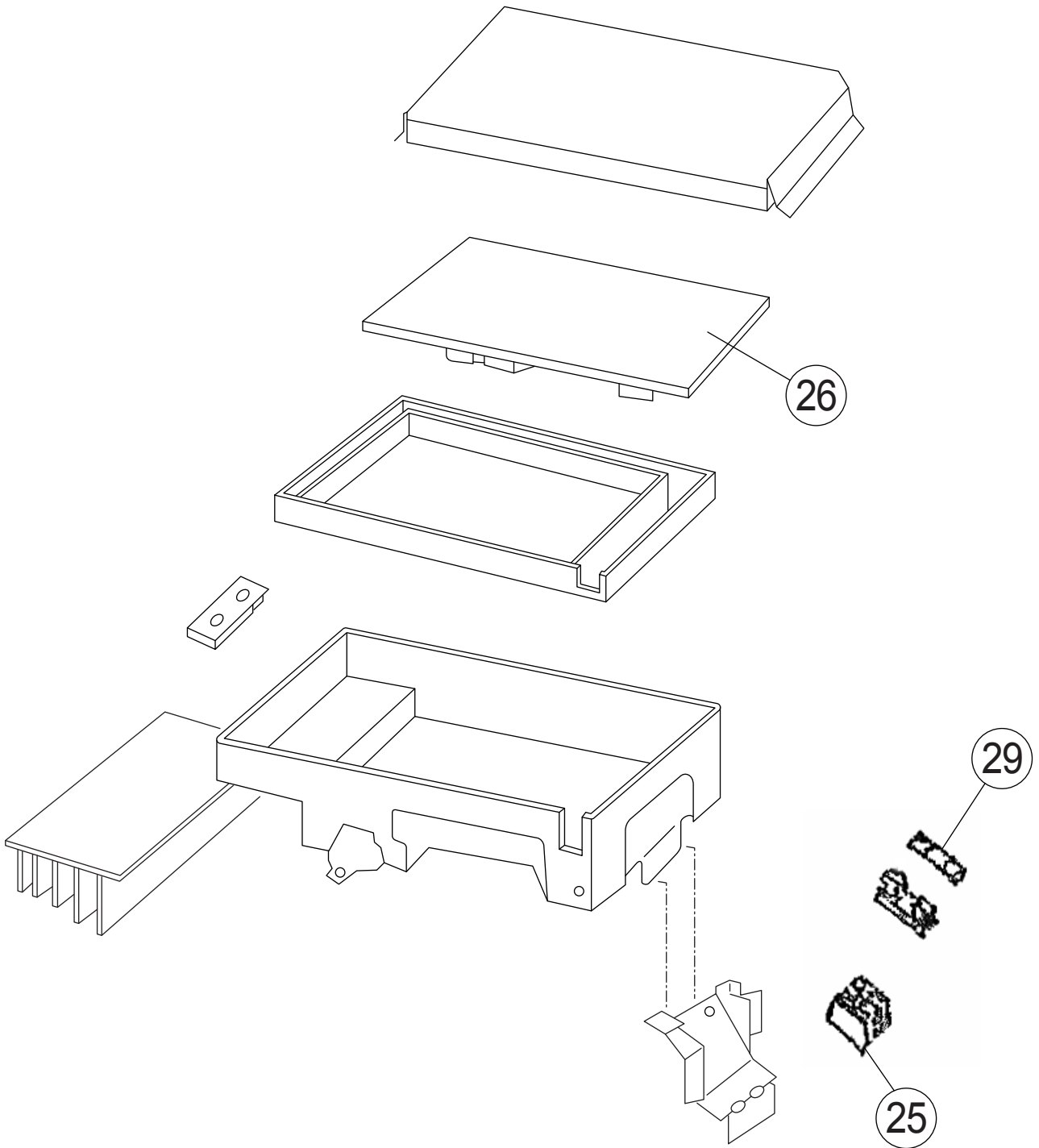
INDOOR UNIT



OUTDOOR UNIT



OUTDOOR UNIT



PARTS LIST

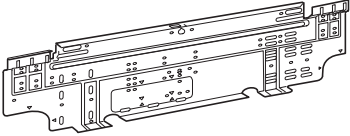

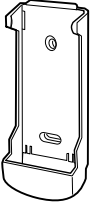

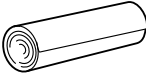

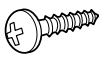
INDOOR UNIT

Ref.	Description	Part number
1	Air Filter-L	9312920013
2	Air Filter-R	9312921010
3	Front Panel	9312914029
4	Top Grill	9313948016
5	Intake Grille Assy	9313157074
6	Intake grill Clamp	9306755010
7	Louver-U	9309991033
8	Louver-Z	9309992030
9	Louver Holder Assy	9309993013
10	Gear A	9309994003
11	Casing Assy	9311354079
12	Casing Cover F	9309987005
13	Casing Cover B	9314160011
14	Crossflow Fan Assy	9307836015
15	Clamper (Motor)	9310102008
16	Bearing-C Assy	9306628017
17	Drain Hose Assy	9314147012
18	Drain Cap Assy	9314493010
19	Wire Clamper	9311946014
20	Box Switch	9312908011
21	Cover (Switch)	9312909018
22	Evaporator Total Assy	9313099015
23	Filter Guide	9313920012
25	H-Insulation (Pipe)-E	9304607007
26	Evaporator Holder-L Assy	9313174019
27	Evaporator Holder-R	9309983014
28	Water Seal	9312912018
29	Bracket (Evaporator)	9310464007
30	Power Cord Assy	9900339012
31	Controller PCB Assy	9707375015
32	Indicator PCB Assy	9705375024
33	Air Cleaner Assy	9313148041
36	Motor, Step	9900139025
37	Fan Motor, Brushless DC	9602109012
38	Remote Control	9315027047
39	Air Clean Filter	9313275013
41	Remote Control Holder	9305642045
--	Room Thermistor	9700801108
--	Pipe Thermistor	9702039042
--	Transformer, Switch T1	9705054011
--	Varister VA1	0000785020
--	Fuse FSL 250 3.15(EM)	0600376062
--	Fuse Holder FH1-FH2	0500158072
--	Relay DW12D1 K1	9704185013
--	Manual Auto Switch SW1	9703476013
--	Evaporator B Assy	9311275022

OUTDOOR UNIT

Ref.	Description	Part number
1	Top Panel Assy	9309230057
2	Top Panel Seal	9309228016
3	Cabinet Assy	9314809040
4	Blow Down Grille	9308884015
5	Cabinet Right Assy	9309236011
6	Fan Ring	9308885012
7	Grip	9308880017
8	Switch Cover	9308882028
9	Protective Net	9315319012
10	4-Way Valve Assy	9315726018
11	Expansion Valve Assy	9311641018
13	Condenser	9311381037
14	Thermistor Spring-A	313728262708
15	Thermistor Spring	9300089012
16	Propeller Fan	9309909014
17	Nut	9304902003
18	Motor Bracket	9308872012
19	Separator Assy	9312971015
20	Base Assy, Painted	9308869081
21	3-Way Valve Assy	9315159014
22	2-Way Valve Assy	9313064013
24	Cord Clamp	9307271014
25	Terminal	9306489038
26	Inverter PCB Assy	9707039153
29	Fuse	0600382018
32	Expansion Valve Coil	9900057039
34	Fan Motor	9601725015
35	Compressor Assy	9313764012
36	Emblem	9315210012
39	Solenoid Coil	9970033018
--	IPM	9705720015
--	Thermistor Assy	9900148027
--	Outdoor Thermistor	9900210045

ACCESSORIES

Name and Shape	Part number
Wall hook bracket 	9310001004
Remote control 	9315027047
Remote control holder 	9305642045
Battery (penlight) 	0600185527
Cloth tape 	9310519004
Tapping screw (big) (φ 4 x 25) 	0700076046
Tapping screw (small) (φ 3 x 12) 	0700019036

0606G3095