

SPLIT TYPE
ROOM AIR CONDITIONER
WALL MOUNTED TYPE

SERVICE MANUAL

Indoor unit	Outdoor unit
ASYB24LDC	AOYS24LDC
ASYB24LDC	AOYS24LDL



CONTENTS

SPECIFICATIONS.....	1
DIMENSIONS.....	2
REFRIGERANT SYSTEM DIAGRAM.....	3
CIRCUIT DIAGRAM.....	4
INDOOR PCB CIRCUIT DIAGRAM.....	5
OUTDOOR PCB CIRCUIT DIAGRAM.....	8
ERROR CONTENTS.....	13
DISASSEMBLY ILLUSTRATION.....	14
PARTS LIST.....	20
ACCESSORIES.....	22

SPECIFICATIONS

INDOOR UNIT	ASYB24LDC
OUTDOOR UNIT	AOYS24LD_
COOLING CAPACITY	7.10 kW
HEATING CAPACITY	8.10 kW

ELECTRICAL DATA

POWER SOURCE	230 V	
FREQUENCY	50Hz	
RUNNING CURRENT	COOLING	9.7 A
	HEATING	9.8 A
INPUT WATTS	COOLING	2.21 kW
	HEATING	2.24 kW
E.E.R.	COOLING	3.21 kW/kW
COP	HEATING	3.62 kW/kW
MOISTURE REMOVAL	3.0 L/hr	
AIR CIRCULATION HIGH	1,170 m ³ /hr	

COMPRESSOR

TYPE	Hermetic type, 4 pole, DC inverter motor, Scroll	
DISCRIMINATION	5CS160XAA23	
REFRIGERANT	R410A	1,600 g

FAN MOTOR

POWER SOURCE	230 V	
INDOOR UNIT	HIGH	1,380 r.p.m.
	MED	1,170 r.p.m.
	LOW	980 r.p.m.
	QUIET	860 r.p.m.
OUTDOOR UNIT	COOL	1,000 r.p.m.
	HEAT	1,050 r.p.m.

DIMENSIONS

INDOOR UNIT	H x W x D	320 x 998 x 228 mm
OUTDOOR UNIT	H x W x D	578 x 790 x 315 mm

WEIGHT

INDOOR UNIT	Gross / Net	18 kg / 14 kg
OUTDOOR UNIT	Gross / Net	48 kg / 44 kg

NOISE LEVEL

INDOOR UNIT	HIGH	Cool 49 dB / Heat 48 dB
	MED	Cool 43 dB / Heat 42 dB
	LOW	Cool 38 dB / Heat 37 dB
	QUIET	Cool 33 dB / Heat 33 dB
OUTDOOR UNIT		Cool 52 dB / Heat 54 dB

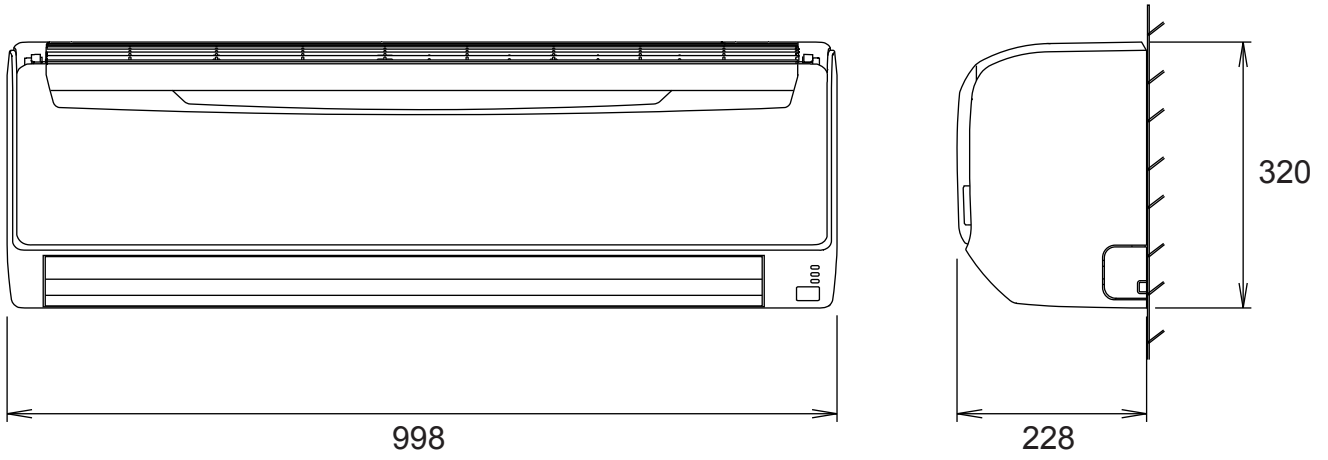
REFRIGERANT CHARGE (R410A)

FULL CHARGE	Pipe Length	15 m	1,600 g
		20 m	1,700 g
		25 m	1,800 g
		30 m	1,900 g
ADDITIONAL CHARGE			20 g / m

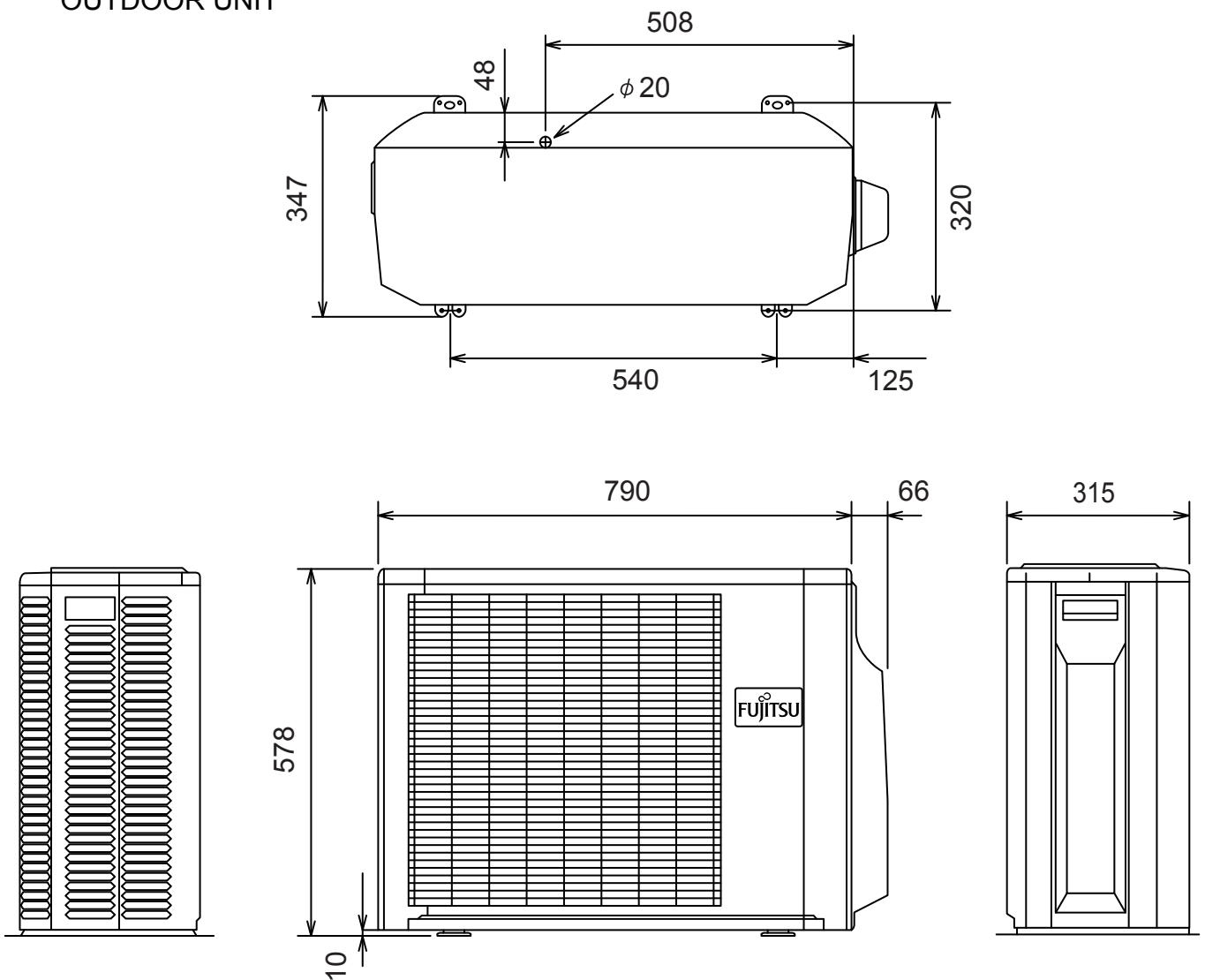
OUTLINE AND DIMENSIONS

Unit : mm

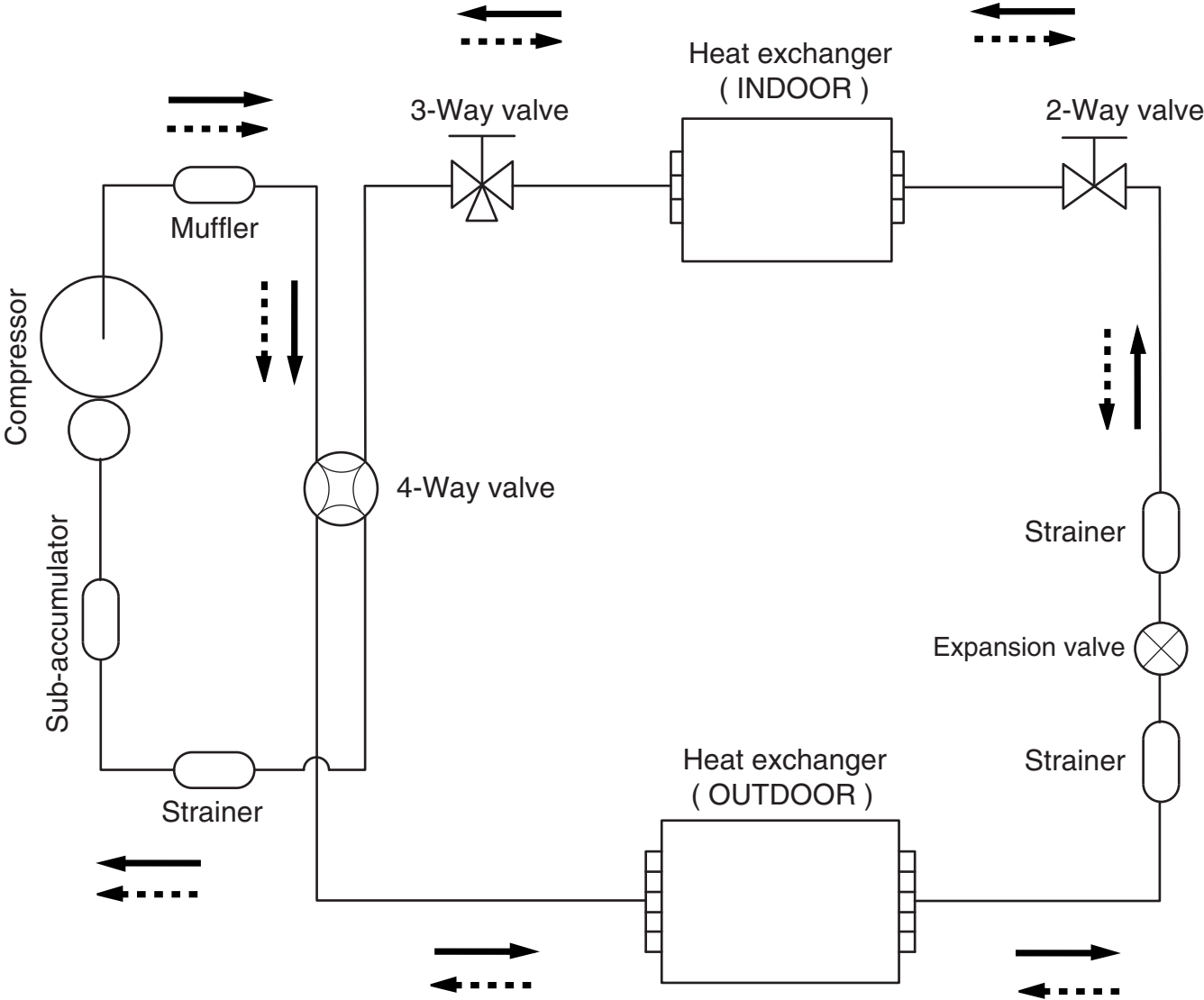
INDOOR UNIT



OUTDOOR UNIT



REFRIGERANT SYSTEM DIAGRAM



Cooling
 Heating

Refrigerant pipe diameter
 Liquid : 1/4" (6.35 mm)
 Gas : 5/8" (15.88 mm)

PCB Circuit Diagrams

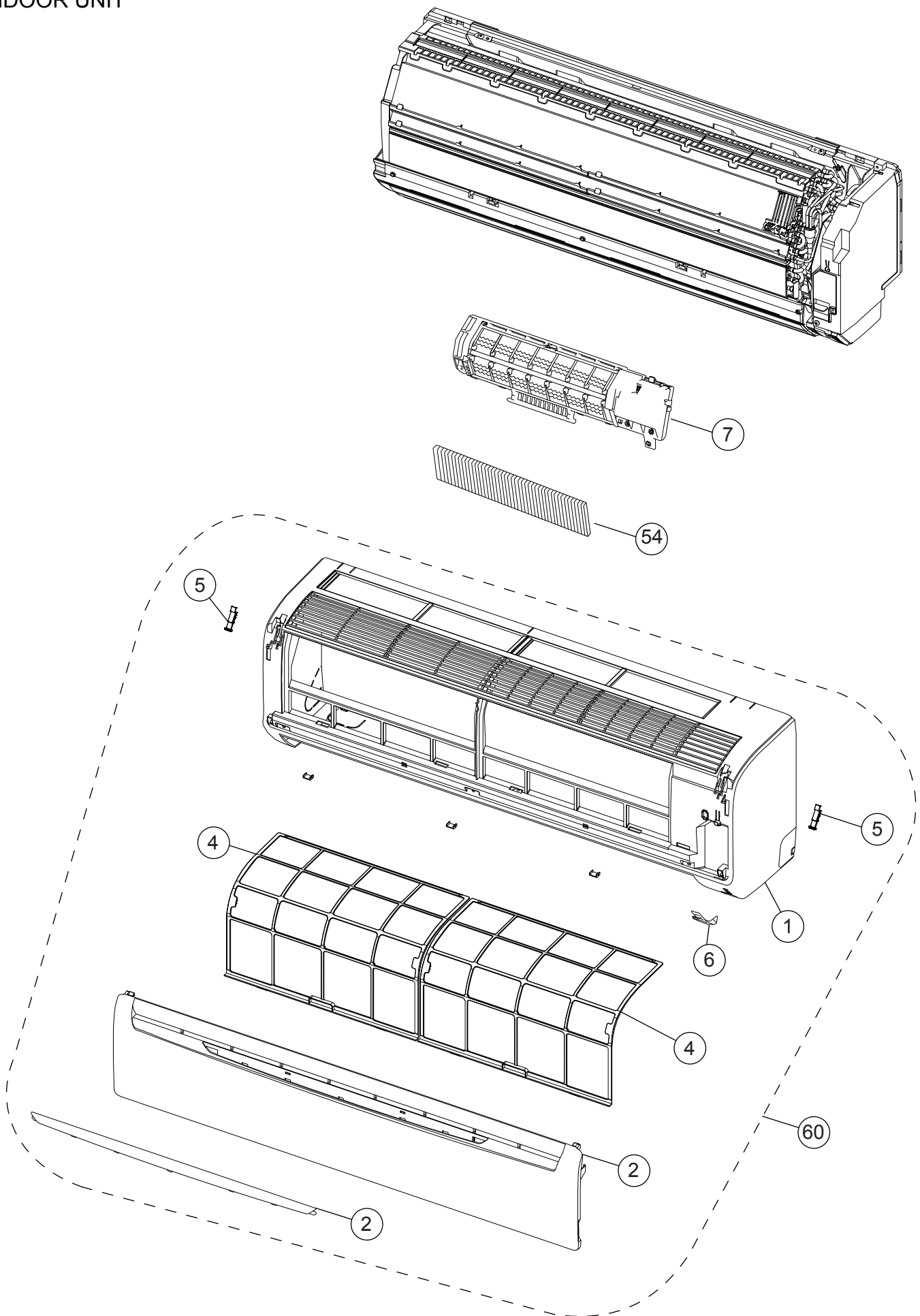
not available at time of publication

ERROR CONTENTS

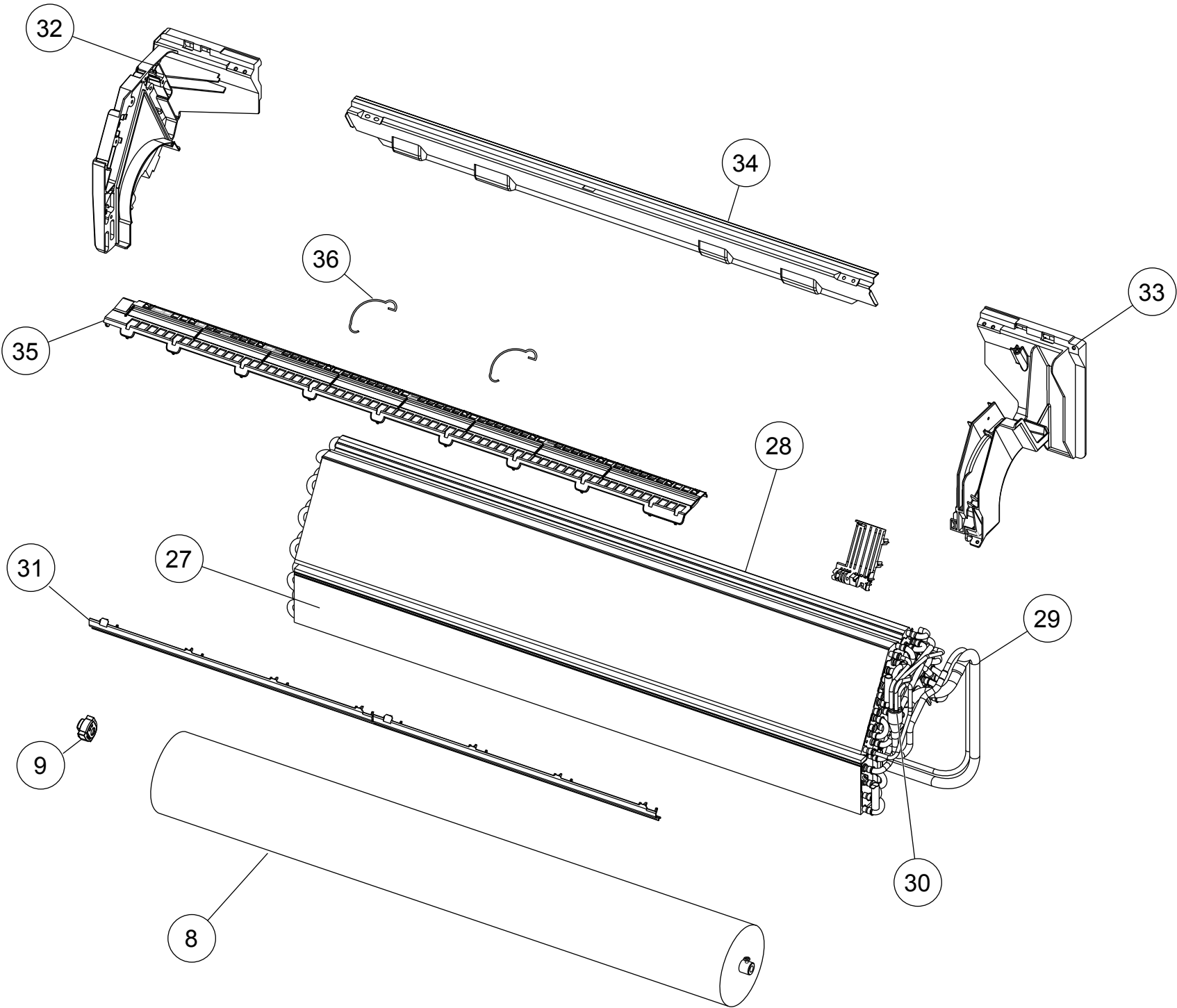
Error	Display		Error
	Operation LED	Timer LED	
Serial signal error	Normal	2 flash	Serial signal (reverse) error, at operation start up
		3 flash	Serial signal (reverse) error, during operation
		4 flash	Serial signal (forward) error, at operation start up
		5 flash	Serial signal (forward) error, during operation
		8 flash	Wired remote controller error
Indoor unit thermistor error	2 flash	2 flash	Indoor temperature thermistor open / short
		3 flash	Heat exchanger middle thermistor open / short
Outdoor unit thermistor error	3 flash	2 flash	Discharge thermistor open / short
		3 flash	Heat exchanger thermistor open
		4 flash	Outdoor temperature thermistor open / short
		8 flash	Compressor temperature thermistor open / short
Indoor unit control error	4 flash	2 flash	Forced automatic SW welded
		3 flash	Main relay welded
		4 flash	Power interruption error
		7 flash	VDD permanent stop protection
		8 flash	reverse VDD permanent stop protection
Outdoor unit control error	5 flash	2 flash	Current trip error
		3 flash	CT abnormal
		5 flash	Compressor location detection error
		6 flash	Outdoor unit fan drive system abnormal
Indoor fan motor error	6 flash	2 flash	Abnormal lock
		3 flash	Abnormal rotation
Refrigerant cycle error	7 flash	2 flash	Discharge Temperature abnormal
		3 flash	Cooling high pressure abnormal rise
		5 flash	Pressure switch trouble
Optional function error	8 flash	2 flash	Active filter voltage trouble (second time)
		3 flash	Active filter voltage trouble (first time)
		4 flash	PFC circuit error
Model information error	0.1 sec on/off	0.1 sec on/off	Model information error

DISASSEMBLY ILLUSTRATION

INDOOR UNIT



INDOOR UNIT

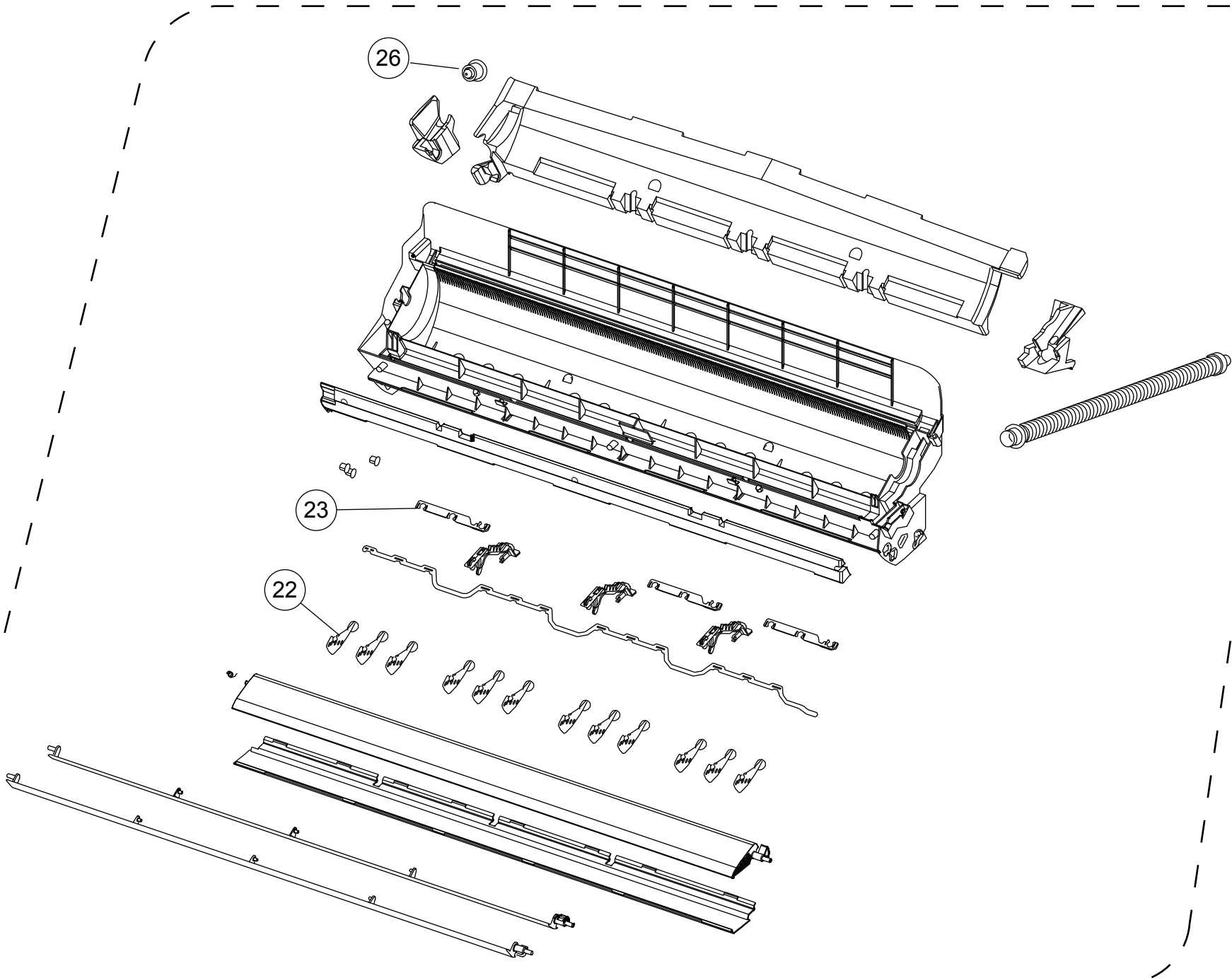


10

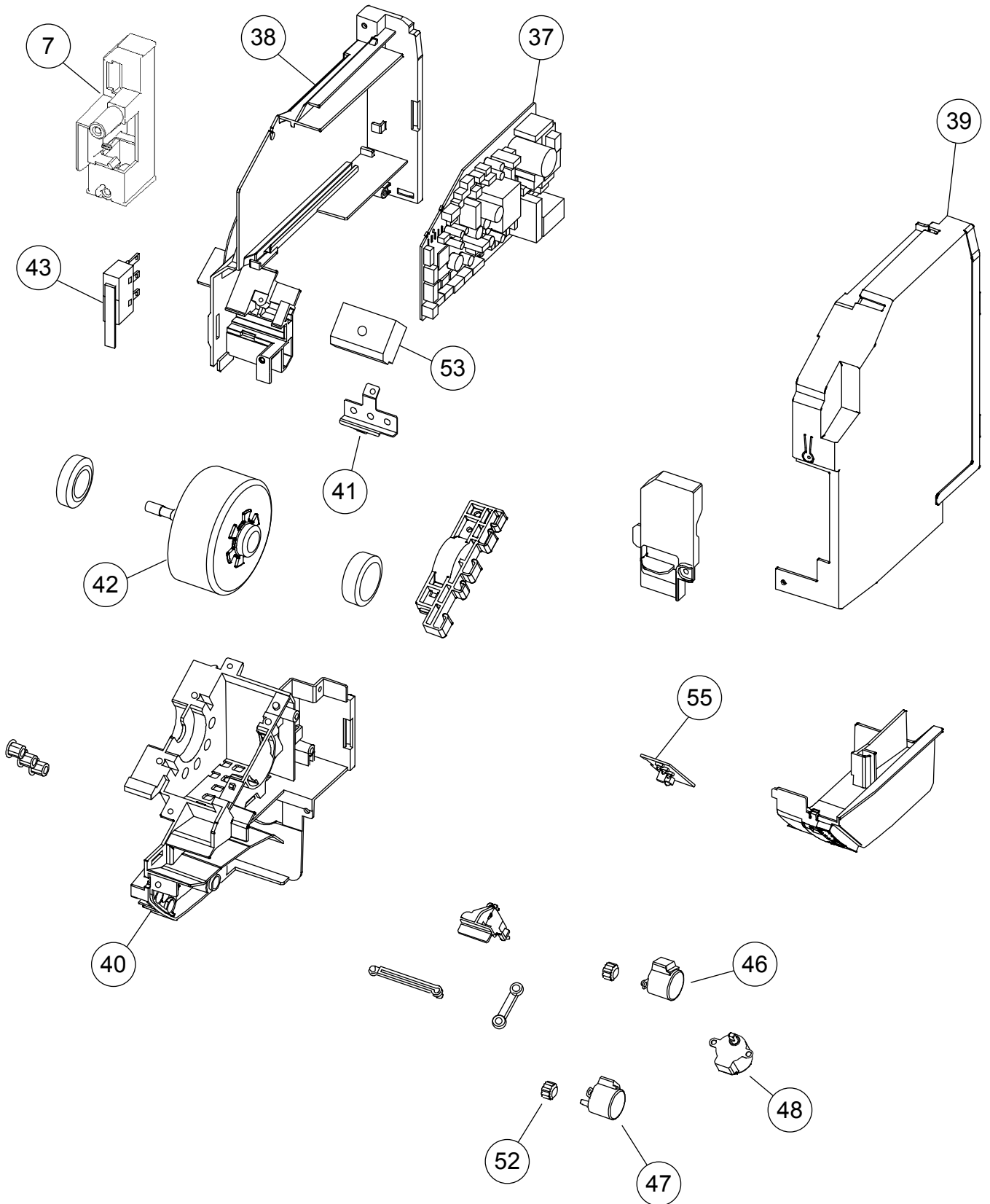
26

23

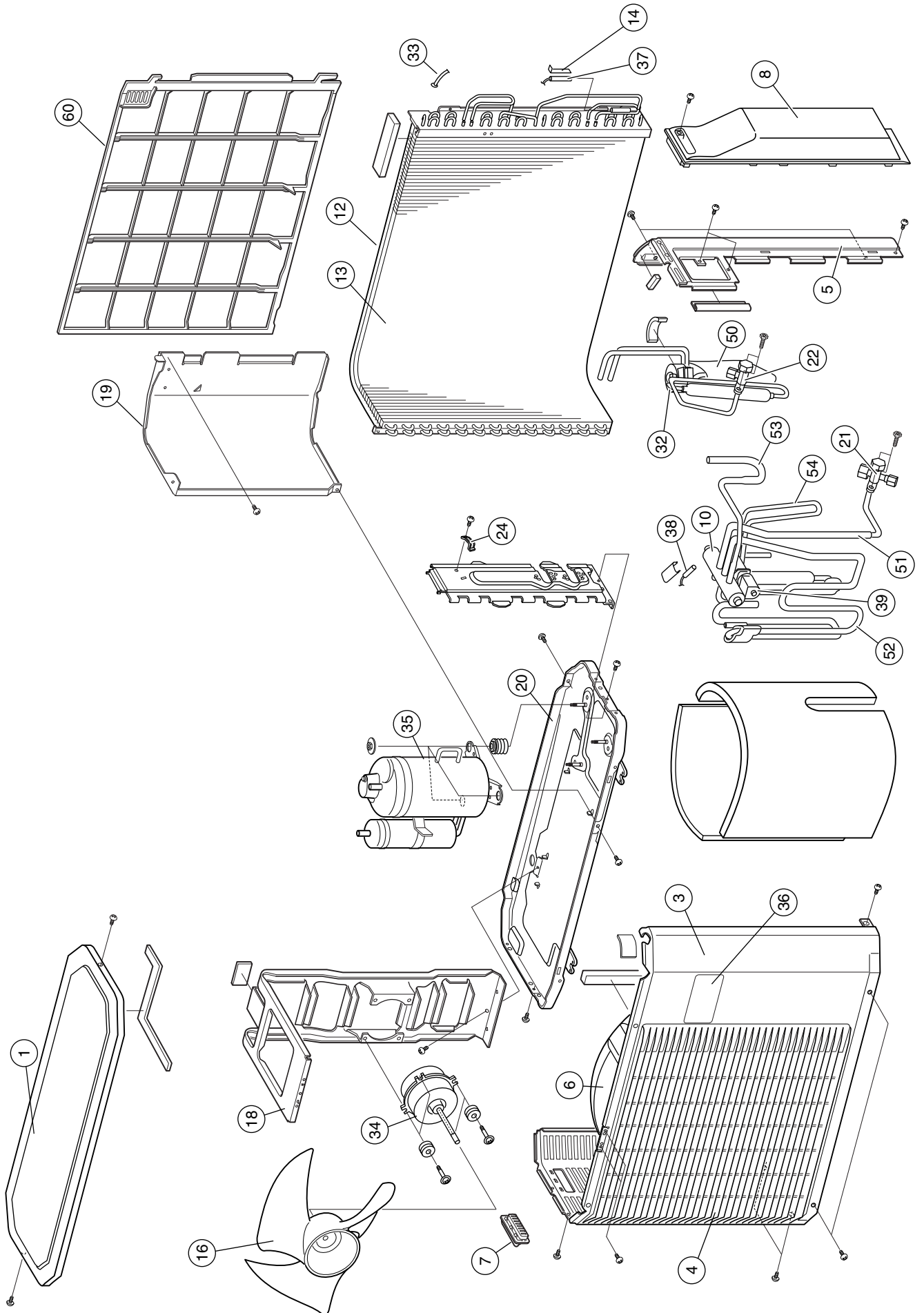
22



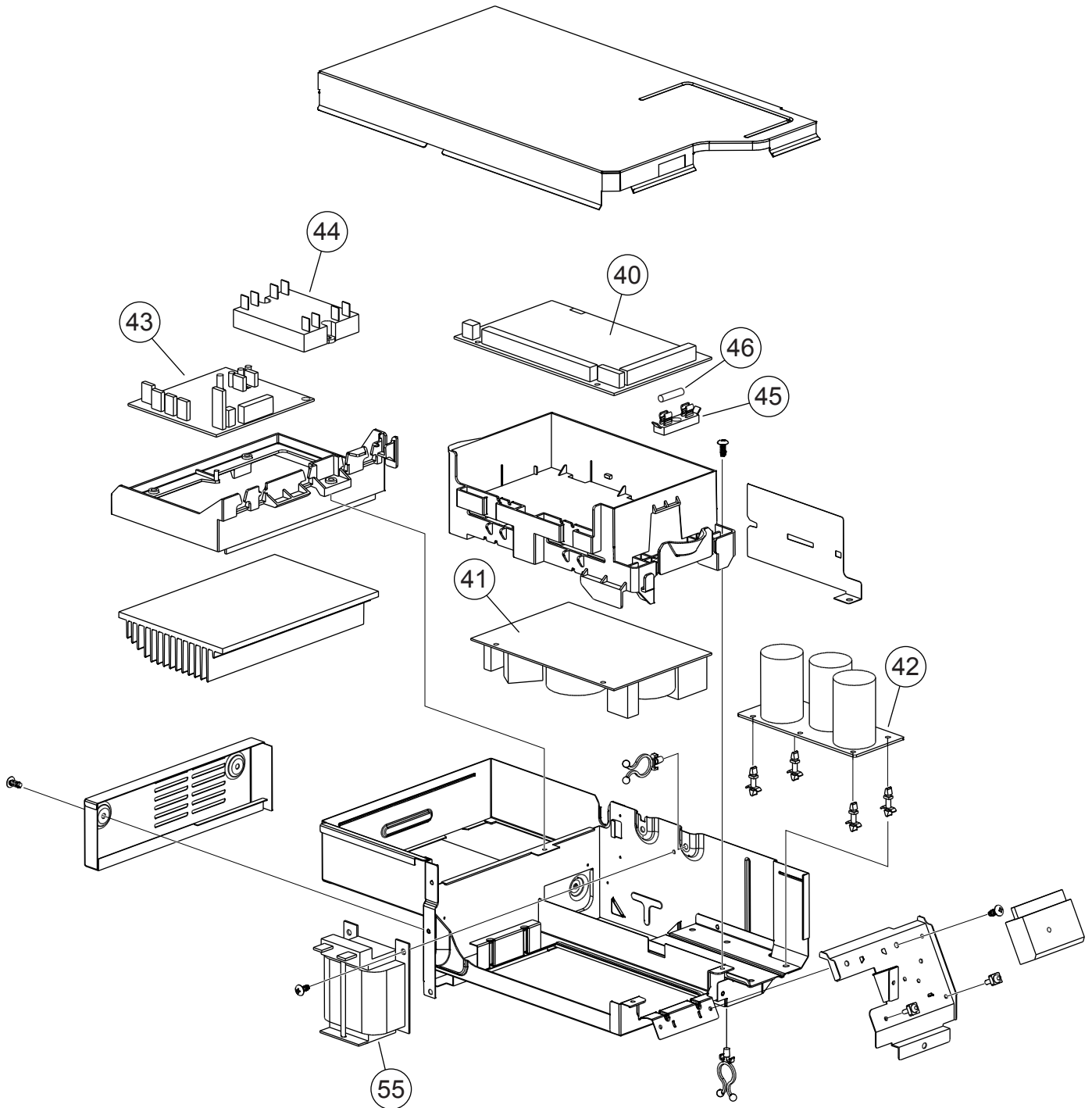
INDOOR UNIT



OUTDOOR UNIT



OUTDOOR UNIT



PARTS LIST


INDOOR UNIT

Ref	Description	Part No
1	Front Panel	9314991042
2	Intake Grille Assy	9315336071
4	Air Filter	9315014016
5	Clamper Grille	9306755010
6	Receiver Window	9315010018
7	Air Cleaner Assy	9313148041
8	Crossflow Fan Assy	9315024015
9	Bearing C Assy	9306628017
10	Casing Assy	9315331014
22	R and L Louver	9311997016
23	Spacer B	9312441013
26	Drain Cap	9367677009
27	Evaporator Assy	9315347015
28	Evaporator Assy B	9315349019
29	Connection Pipe Assy	9315354013
30	Distributor Assy	9315350015
31	Water Seal	9315251015
32	Evaporater Holder R	9314994012
33	Evaporater Holder L	9314995019
34	Rear Bracket	9315022011
35	Filter Guide	9315013019
36	Filter Guard	9315411013
37	Controller PCB Assy	9707090154
38	Control Box	9314996016
39	Control Cover	9314997013
40	Motor Case	9314998010
41	Terminal Earth	9315028013
42	DC Brushless Motor	9602163014
43	SWITCH MICRO	9900286026
46	Motor, Step	9900384029
47	Motor, Step	9900384036
48	Motor, Step	9900139063
52	Gear A	9309994003
53	Terminal	9900385019
54	Air Clean Filter	9313275013
55	Indicator PCB Assy	9707210019
60	Front Panel Total Assy	9315335104
---	Remote Controller	9315027122

OUTDOOR UNIT

Ref	Description	Parts No.
1	Top Panel Assy	9309230064
3	Cabinet Sub Assy	9314809019
4	Blow Grill	9308884015
5	Cabinet Right Assy	9309236028
6	Fan Ring	9308885012
7	Grip	9308880017
8	Switch Cover Assy	9309237032
10	4-Way Valve	9900163013
12	Condenser Assy B	9315303011
13	Condenser Assy	9315302014
14	Thermistor Spring A	313728262708
16	Propeller Fan	9309909014
18	Motor Bracket Assy	9313432027
19	Separater	9315213013
20	Base Assy	9315296023
21	3-Way Valve Assy	9315414014
22	2-Way Valve Assy	9313062019
24	Cord Clamp	9307271014
32	Expansion Valve Coil	9900057039
33	Outdoor Temp. Thermistor	9703516108
34	DC Brushless Motor	9602110018
35	Compressor Assy	9315297013
36	Emblem Rear	9315210012
37	Heat Exchanger Thermistor	9704220059
38	Discharge Thermistor	9704219091
39	Solenoid	9970055010
40	Inverter PCB Assy	9707121209
41	Capacitor PCB Assy	9707128055
42	Power PCB Assy	9707129052
43	TR PCB Assy	9707125054
44	ACTPM	9703457012
46	Fuse	0600086039
45	Fuse Holder	0500158072
50	Pulse Motor Valve Assy	9315310019
51	Joint Pipe (3 Way Valve) Assy	9315308016
52	Pipe (Condenser Outlet) Assy	9315304018
53	Pipe (Condenser Inlet) Assy	9315305015
54	Discharge Pipe Assy	9315312013
55	Chock Coil	9900366018
60	Protective Net	9315033017

ACCESSORIES

Name and Shape	Part No.
Wall hook bracket 	9315023018
Remote control 	9315027122
Remote control unit holder 	9305642045
Battery (penlight) 	0600185534
Cloth tape 	9310519004
Tapping screw (big) 	0700076046
Tapping screw (small) 	0700019036
Air cleaning filter 	9313275013
Drain pipe 	9301102000

0610G3163